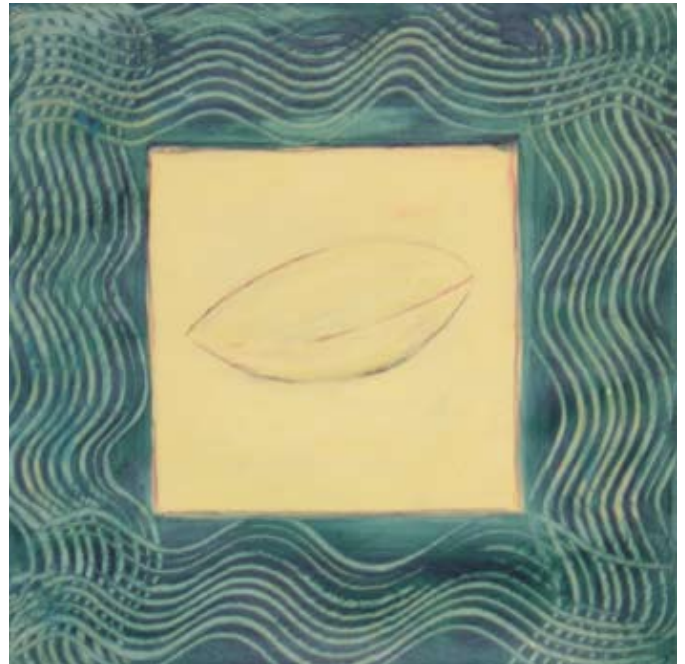




ROUGH WEATHER AND CALM SEAS

Katharine Cosenza Butler continues her exploration of life using the boat form as a symbol of the individual's small but indomitable place in the vast mystery of this world. A longtime watercolorist, Butler develops her new series by giving the paint greater freedom and by adding other media to push her images further. In each piece certain segments border on abstraction, while the whole is brought back into focus by means of line and drawing.

Throughout this series, Butler eloquently makes her statement about the fragile, often perilous, and yet determined path we all share. In her own words, "It is a path that for some calls for courage, for others patience and endurance, and others faith and hope, but for all of humanity it is how we navigate that finally informs us."



Joyous Solitude by Katharine Cosenza Butler